

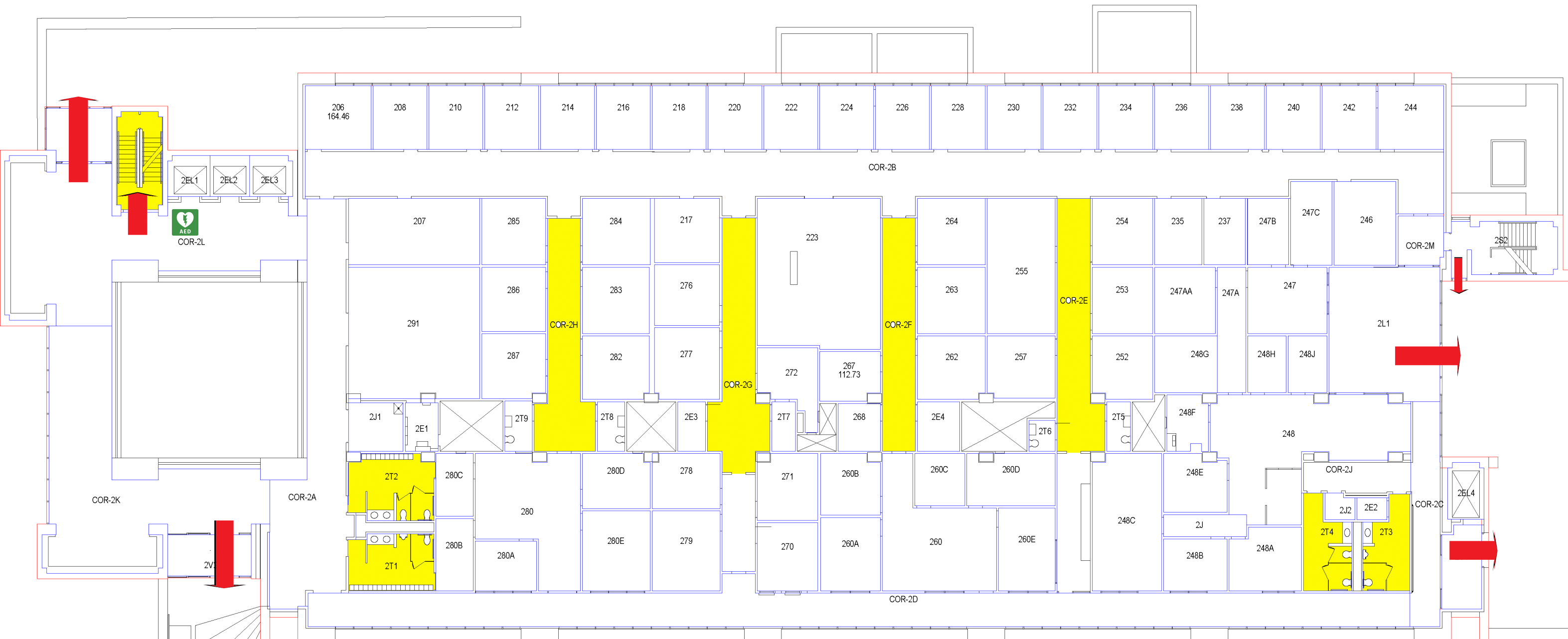
 Emergency Exits

 Area of Refuge

 AED Location

 Stop the Bleed

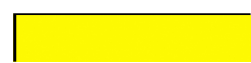
EAD, Level 1



Emergency Exits




AED Location



Area of Refuge

EAD, Level 2



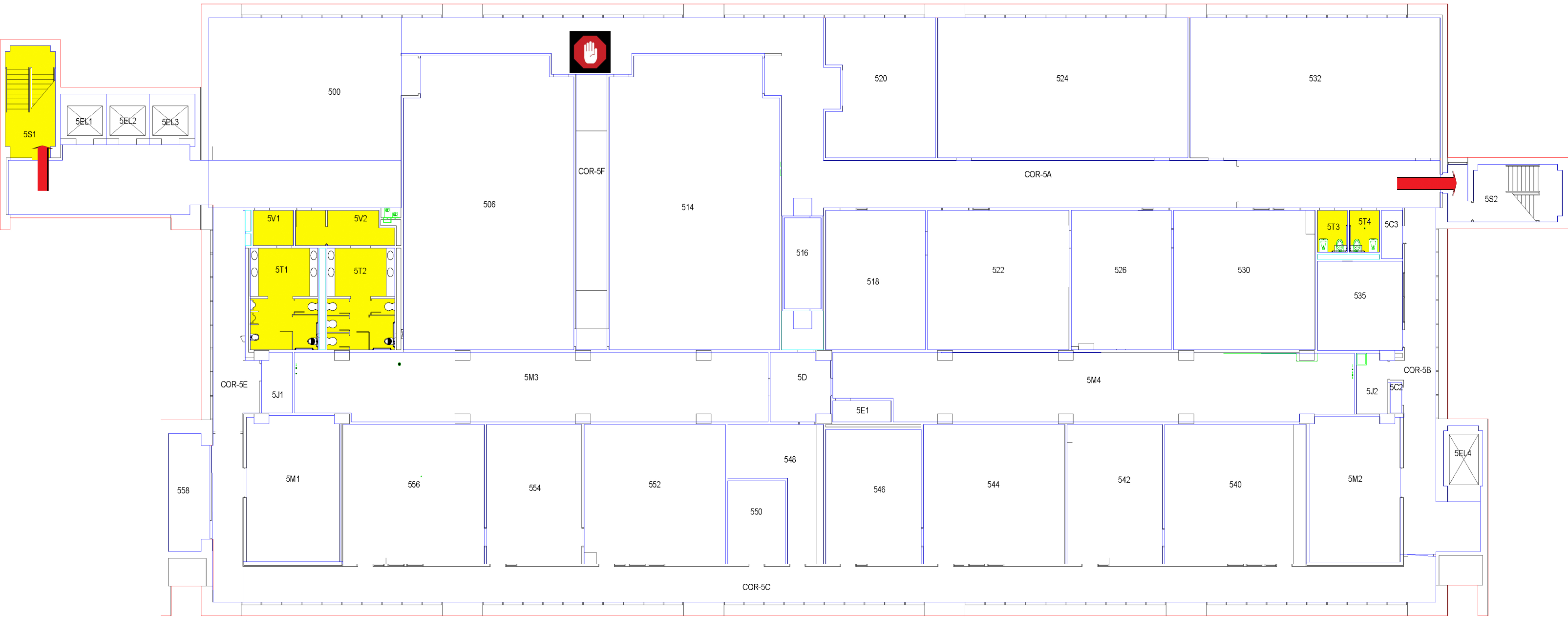
 Emergency Exits
 Area of Refuge


EAD, Level 3



- Emergency Exits
- Area of Refuge




EAD, Level 4



-  Emergency Exits
-  Area of Refuge
-  Stop the Bleed

EAD, Level 5




-  Emergency Exits
-  Area Of Refuge
-  Stop the Bleed

EAD, Level 7



 Emergency Exits

 Area of Refuge

 Stop the Bleed

 AED Location

EAD, Level 8

BUILDINGS

1. Carl E. Everett Education & Administration
3500 Camp Bowie Blvd
2. Research & Education
1055 Montgomery St
3. Gibson D. Lewis Library
955 Montgomery St
4. Health Pavilion
855 Montgomery St
5. Founder's Activity Center
3515 W. 7th St
6. Geriatric Annex
3501 W. 7th St
7. General Services
3420 Darcy St
8. Facilities Management
3416 Darcy St
9. Center for BioHealth
3400 Camp Bowie Blvd
10. Interdisciplinary Research & Education Building
3430 Camp Bowie Blvd
11. Physicians Fort Worth Surgical Center
975 Haskell Ave
12. Student Service Center
1051 Haskell Ave
13. Medical Education & Training
1000 Montgomery St
14. UNTHSC Police
3600 Mattison Ave
15. Lena Pope Early Learning Center
3620 Modlin Ave
16. Pediatrics and Women's Health Research and Programs
3632 Modlin Ave
17. Healthy Start
3633 W. 7th St
18. Storage/Ground Shop
3629 W. 7th St
19. St. Emilion French Restaurant
3617 W. 7th St
20. Professional Offices
3605 and 3609 W. 7th St

